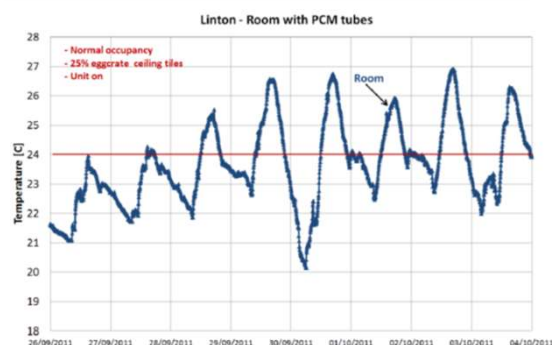


Linton College Passive Cooling, UK

Although schools in the UK may require cooling for only a few days of the year but the current regulations dictates to keep the upper limit below an acceptable limit. This over-heating may occur south facing classrooms.

Conventional mechanical cooling might solve this issue but cost associated with not only installation but also on going maintenance services can not be accommodated with the school budgets.



The cooler night ambient is used to store cool energy within the PCM passive cooling modules placed within the false ceiling area and this stored energy enables the day cooling loads / solar gains within the classroom is absorbed by PCM modules without using any mechanical cooling machinery.

+25°C (77°F) PCM encapsulated in 50mm (2") diameter x 1,000mm (40") HDPE **TubeICE™** containers. Tubes are fixed at ceiling level using standard 50mm (2") pipe bracket system behind the false ceiling panels. Solid ceiling panels are replaced with egg crate panels allowing air to escape to the ceiling void whereby tubes acts like a heat sponge..

